

INVEST:

His { Kingdom
Church
People





Introduction	2
His Kingdom, Church, People	4
Where Have We Been?	5
Where Are We Going?	7
Key Growth Metrics	9
About the Buildings	11
The Financials	13
Prayer Guide	16
FAQs	17



CURREY CREEK
CHURCH





As you know, our church and community are growing as people continue to move to Boerne and Kendall County. While all the growth presents challenges for Currey Creek, we believe that it presents great opportunities as well!

In short, we believe that the Lord is leading us to build a new worship center and office space, as well as remodel some current facilities. For many reasons, we believe the time to do this is now.

In Christ,

Dr. John Free
SENIOR PASTOR





His Kingdom

We are continuing to invest in His Kingdom. We are still a church that will plant churches. We will continue to be about building His Kingdom, and not Currey Creek's Kingdom. We believe part of planting in a healthy way means building a strong foundation from which to send out multiple church planters in the future.

His Church

We believe that Currey Creek is Christ's Church. Jesus said, "I will build my church..." (Matt 16:18) It is not the Senior Pastor's church. It is not the Elders' church. It is not the staff's church. It is His Church. We believe it is important we all continue to invest in Currey Creek because it is His Church and we should steward it well.

His People

Every person has been created by God, in His image, and for His purposes. We are His People. Being part of the church in Boerne, Currey Creek is called to reach, share, invite, and care for His People. His people are not just within the walls of our particular church, but they are also the lost, unchurched, or searching in our community.

WHERE HAVE WE BEEN?

2004

Gifted 3 acres,
chapel, and
old two-story
building

2009

Purchased
8.5 acres behind
the chapel for
future growth

2018

Purchased
2.5 acres behind
the worship center
for future growth

2001

First church service:
120 people at
Middle School South

2007

Added 4
portable buildings
for offices and
classrooms

2014

Completed
current 600 seat
Worship Center

2019

Launched overflow
space in the chapel to
accommodate growth

2020

Completed
Creek Life building
for larger lobby space
and classrooms

2021

Purchased
2 acres on the corner
of Cascade Caverns
for future growth

2023

Launched a
third service to
help accommodate
growth

2020

Launched
The Bridge
Fellowship and
Pastor Jared Patrick

2022

Launched
Bergheim Christian
Fellowship and
Pastor Eric Cate

2024

Cast vision for
future growth at
35 Cascade
Caverns Road

WHERE ARE WE GOING?

Implementation of the Staffing Strategy

Over the last year and a half, the Executive Team and Elders have been developing a long-term strategy for staffing at Currey Creek. This strategy includes replacing key vacated pastoral positions, hiring new pastoral positions as needed, and addressing other staffing needs as our church continues to grow.

Leadership Pipeline Development

One critical factor that we have learned from planting churches is that we lose key volunteers, staff, and leaders. We want to develop and implement a plan to develop leaders across ministry lines so that when we plant in the future, we have a “next man up” strategy in place.



Residency Program Implementation

Dr. Free's dissertation was on developing a staffing strategy to facilitate a residency program for church planting. This method of acquiring and developing church planters will allow us to retain key staff members and also send out well equipped pastors.

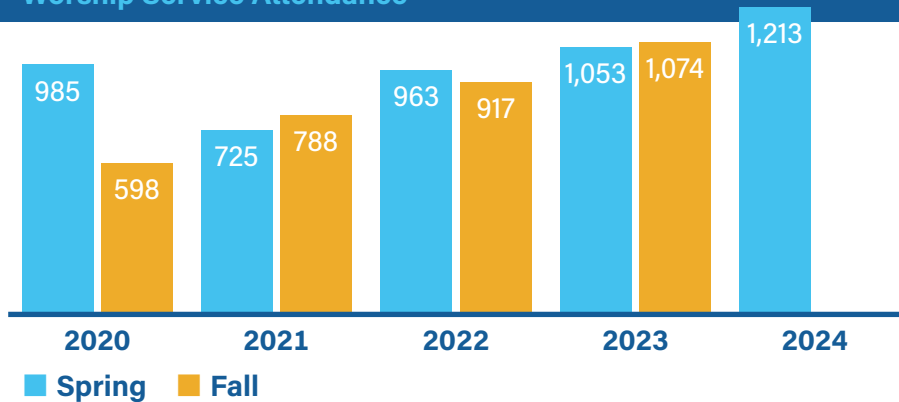
Expanding our Worship facility

Growth is going to happen whether we are proactive or not. As you can see, the new worship facility and offices are only a component part of an overall strategy to facilitate growth, develop disciples and plant healthier churches. The building will allow us to accommodate growth and simultaneously build a stronger base for future church planting.



KEY GROWTH METRICS CURREY CREEK CHURCH

Worship Service Attendance



- **Fall 2020:** Launched The Bridge Fellowship
- **Fall 2022:** Launched Bergheim Christian Fellowship



Currey Creek is situated along the IH-10 corridor, this area has seen tremendous population growth over the last ten years as well as continued projections of strong increases over the next five-plus years that will serve to drive demand for more housing, business and organizations.

The projected growth in Kendall County alone for families is nearly 4,000 new families over the next five years. If we assume that just 5% of those families want to come and join Currey Creek and assume four people per family, that would equate to 800 new people along with other population growth and visitors from the surrounding counties.

KEY GROWTH METRICS
THE CITY OF BOERNE

	2014	2023	2028
Population	12,109	19,492	25,132*

*Projected
Source: Boerne - Kendall County Economic Development Corporation



ABOUT THE BUILDINGS

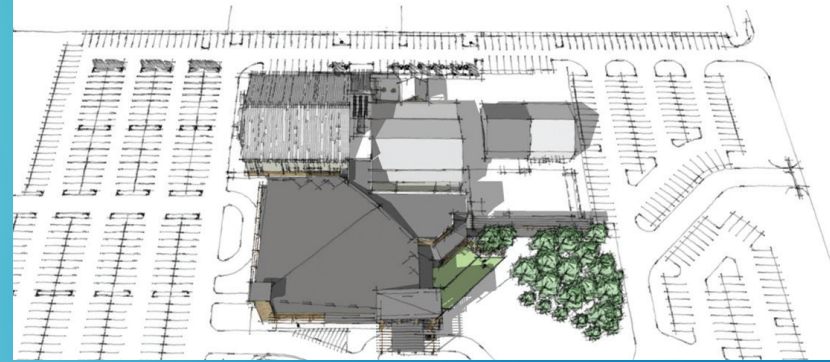
- 1 Current Worship Center**
Square Footage: 11,980
Seating Capacity: 600
- 2 New Worship Center**
Square Footage: 28,500
Seating Capacity: 1,400
- 3 Church Office / Meeting Space**
Square Footage: 8,000 - 10,000



Key Features

- Expanded seating (1,400 vs 600)
- Larger lobby areas with improved circulation
- Expanded Discovery Class meeting area
- Two Nursing Mother's rooms
- Improved feature spaces for Connections, Events and Missions
- New Church Office and Meeting Spaces
- Current Worship Center transitions to new Student Building
- Additional Creek Kids Elementary Classrooms

Target Construction Start 2nd Qtr 2025
Target Opening Fall 2027 (or sooner)



THE FINANCIALS

- Current Estimated Construction Cost \$22M
- Debt Free
- \$5M Building Fund In-Place
- 3-Year Pledge Commitment



Our goal is that the Lord would call each member and visitor to invest in His Kingdom such that we have 100% participation in the Invest Campaign.

We are asking for a 3-Year Pledge Commitment for the sole and exclusive use of supporting the construction effort. This pledge commitment would be in addition to your current gift/tithe amount.

Ways to Give

3-Year Invest Pledge Commitment:

- Upfront Gift
- Annual Commitment × 3
- Semi-Annual Commitment × 6
- Quarterly Commitment × 12
- Monthly Commitment × 36
- Stock or Bond Transfers





Please join us in praying that...

1. God would be glorified. *(Psalm 115:1)*

Pray that in every aspect of this project the Lord would be made much of and that all praise go to Him.

2. Currey Creek would be unified. *(Romans 15:5-6; Philippians 2:1-2)*

Pray that through the process our church would seek and promote unity.

3. Hearts at Currey Creek would be moved to give generously. *(Exodus 35:29; Exodus 36:3-7)*

Pray that our giving is out of generous and grateful hearts.

4. Our giving would be joyous. *(2 Corinthians 9:6-8)*

God loves a cheerful giver! Pray that Currey Creek gives joyfully.

5. We would find favor with the city regarding timely approvals and permits.

FREQUENTLY ASKED QUESTIONS

I thought we were about planting churches, not building buildings. So why are we building?

Our intention is to continue to plant churches as the Lord leads. We have learned that our previous model of church planting is not sustainable. Even with two church plants in the last four years, the Lord continues to bring more people to Currey Creek than He ever has before. We believe it is important to faithfully accommodate and care for the people the Lord continues to bring to our church. We believe this larger worship center will build a firmer foundation to better launch churches in the future. We see this project, in conjunction with leadership development and a pastoral residency program, as a solution to our growth “problem.”

What will this building project allow us to do that we are currently not able to do?

This project will allow us to accommodate the growth that is coming to Boerne and specifically to Currey Creek. It also allows us to build an even stronger base for financial health, a pastoral residency program, and church planting. Lastly, this project allows us to facilitate a more unified corporate gathering by going back to two services with overlap in between for fellowship and community building.

I don't like debt, so how are we going to pay for the building?

Our prayer is that we would not have to incur any debt through gifts and pledges; however, we would pay off any debt as quickly as possible. We also believe that today's dollar is cheaper than tomorrow's dollar so sometimes borrowing actually saves on the cost of the project versus waiting to build until all the funds have been raised.

Don't members have to vote to approve debt?

Yes, our church constitution states that we must vote on the approval of debt over \$500,000. Since we do not yet know how much money will be raised in initial gifts and pledges, we are not ready to receive the members vote on a construction loan. It would be wonderful if we did not have to vote on approving a long-term debt obligation because all our necessary financial gifts were received prior to completion of construction.

Are you concerned this large worship center will change us as a church?

We believe a larger worship center will only change our seating capacity, not our culture and DNA that has been crafted over the last 23 years. We are excited, not concerned, about the thought of more people hearing the gospel and connecting in a Bible-centered church.

FREQUENTLY ASKED QUESTIONS

Do you want to become a mega church?

The simple answer is no. It has never been our vision or strategy to grow bigger for the sake of growing bigger. Our vision and strategy has been to plant churches. But we do believe we have a responsibility to accommodate the growth that the Lord continues to bring to our church. Our belief is that having a larger 'home base' to launch churches from will be an even healthier way to plant churches in the future.

Why are you building the worship center so big?

Historically as a church, we have always built too small. Adding a few hundred more seats to the project is negligible in the overall cost of the project. So wisdom and experience would say, build a worship center that moves us back to two services and gives us ability to grow in each for many years to come. We also believe this building size fits our overall campus footprint proportionally.

Are there other projects besides this in the future?

While we would never say 'no' to the Lord's leading, we do not have any additional building projects planned beyond what is being presented at this time.





CURREY CREEK
CHURCH

curreycreek.com